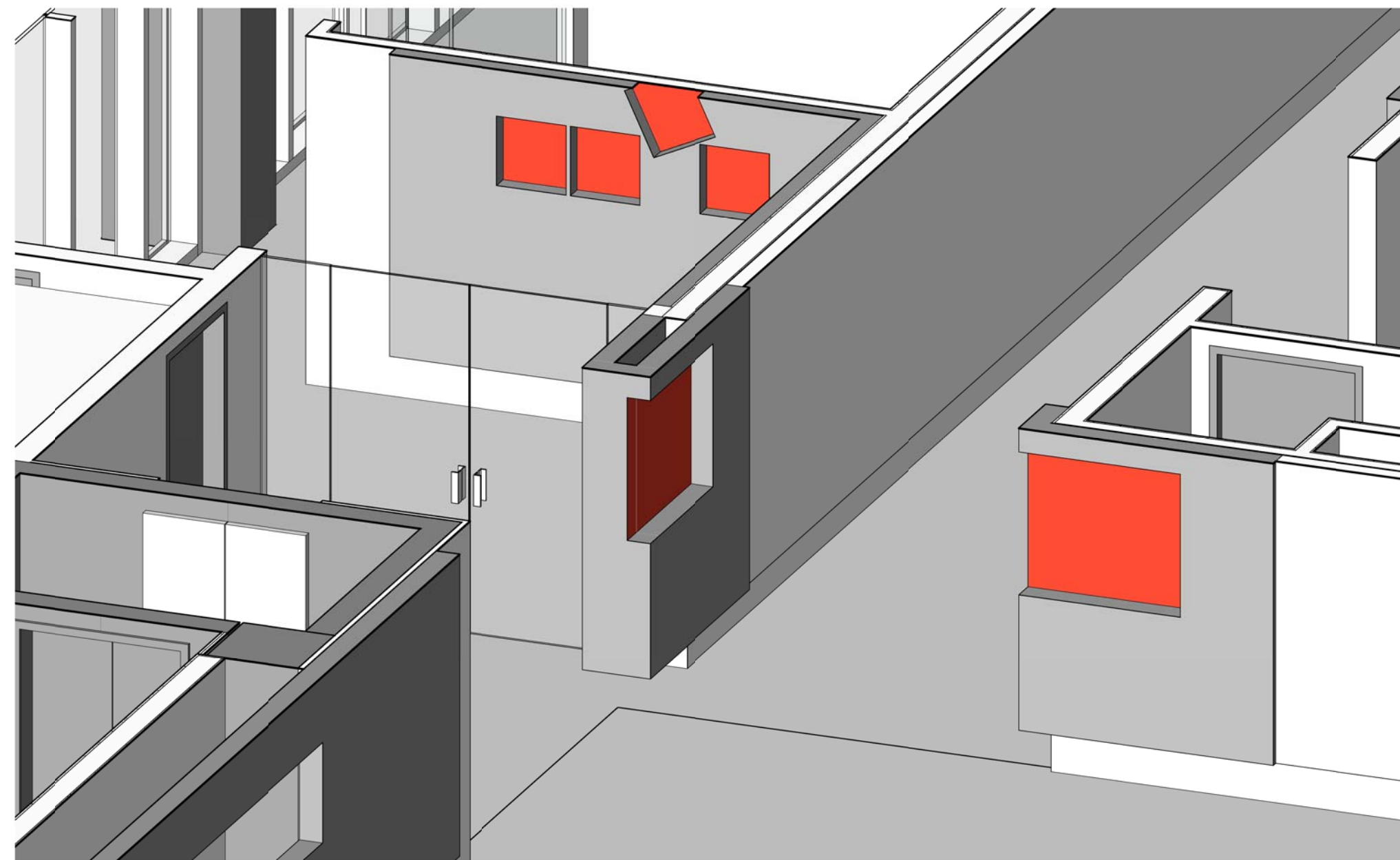
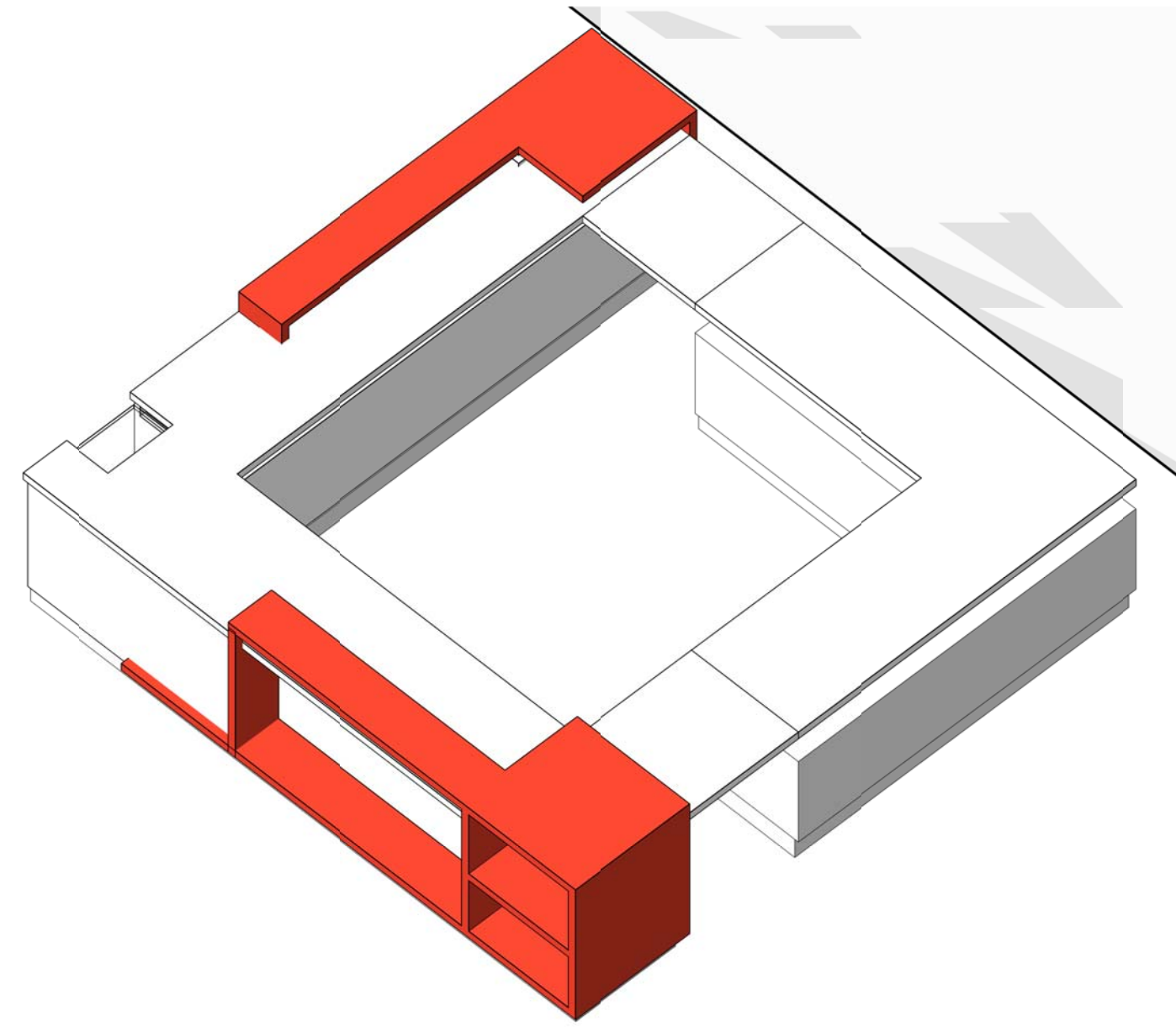


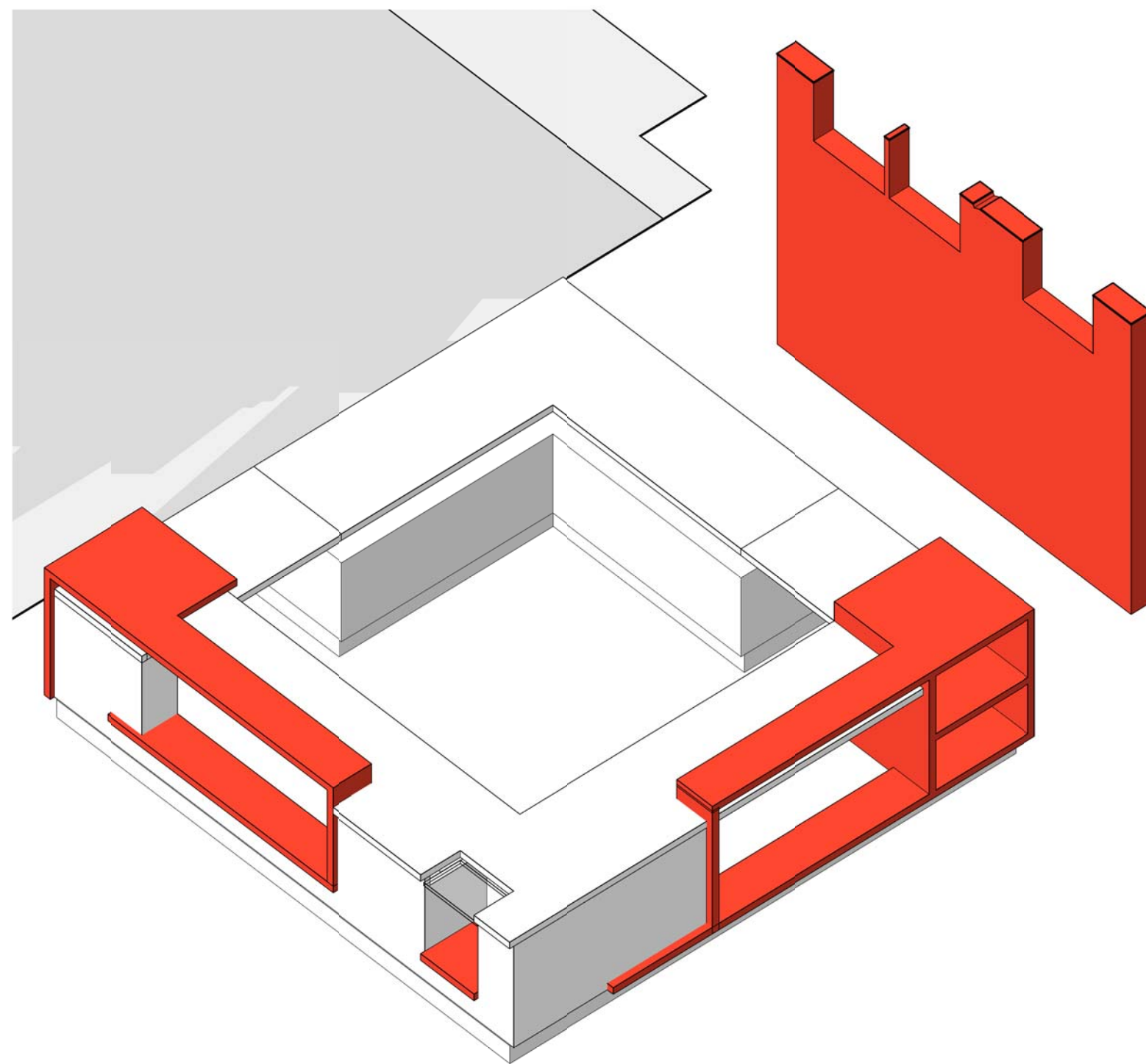
C1 ENTRANCE AND DISPLAY



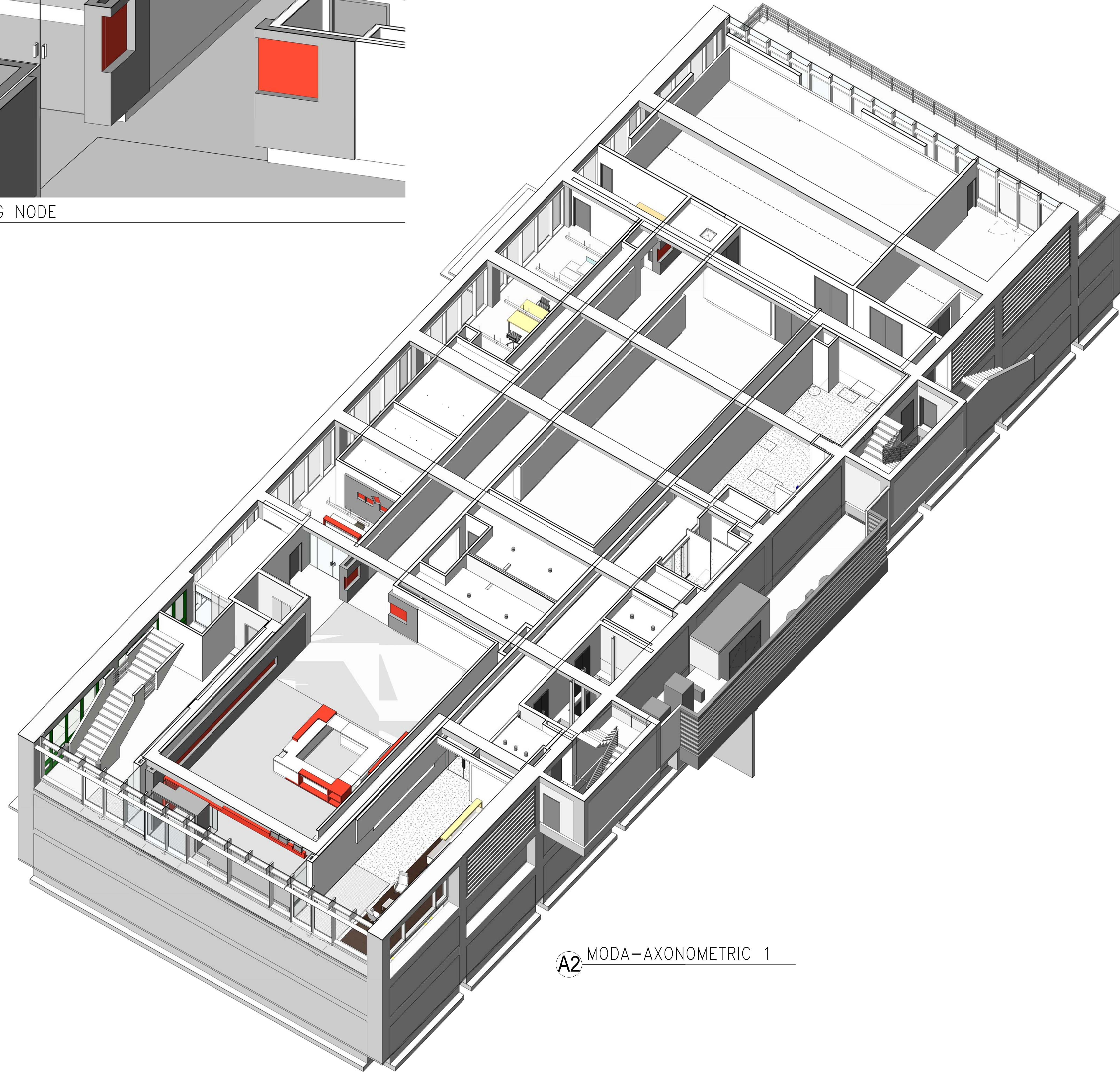
C2 ISO - BRANDING NODE



B1 TICKET DESK NORTH



A1 TICKET DESK SOUTH



A2 MODA-AXONOMETRIC 1

PERKINS + WILL

1382 Peachtree St NE
Atlanta, GA 30309
404.892.2300
404.892.5823
www.perkinswill.com

Interior Construction for MODA, Museum of Design Atlanta Perkins+Will

1315 Peachtree Street
Atlanta, GA 30309

CIVIL CONSULTANT

Kimley-Horn and Associates
817 West Peachtree Street, Suite 601
Atlanta, Georgia 30308
P: 404.419.8700
F: 404.419.8701

STRUCTURAL CONSULTANT

Uzun & Case
210 17th Street, Suite 1200
Atlanta, Georgia 30363
P: 678.553.5200
F: 678.553.5270

MECHANICAL, PLUMBING, ELECTRICAL CONSULTANTS

Integral
11520 Nuckolls Road, Suite 110
Glen Allen, Virginia 23059
P: 804.474.7800
F: 804.474.6822

DOOR AND HARDWARE CONSULTANT

Calvert Independent Hardware
307 Oakwood Circle
Vine Grove, KY 40175
P: 502.930.2039
F: 270.351.2312

ACOUSTICAL CONSULTANT

Mestre Creve Associates
27612 El Lano Road
Laguna Niguel, CA 92677
P: 949.349.0671
F: 949.349.0679



NO.	ISSUE	DATE
11	ADDENDUM M01	12/06/10

Sheet Information

Date	11/18/2010
Job Number	801315.000
Drawn	Author
Checked	Checker
Approved	Approver
	Title

AXONOMETRIC VIEWS

Released for Construction

Sheet
A-560

Copyright © 2008 Perkins+Will